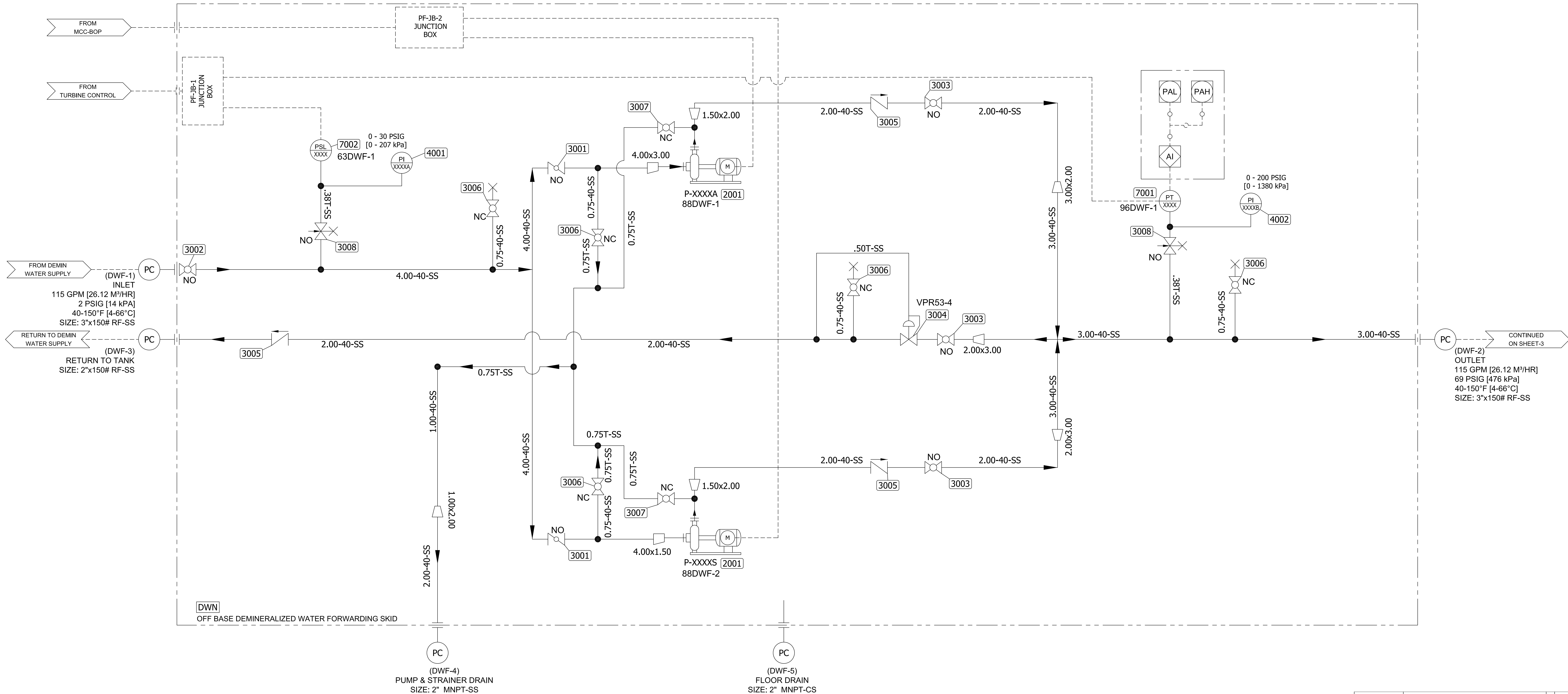


- NOTES:
- SEE AGM-02-0204-PLA-0046 (DEVICE SUMMARY) MLI 0414 FOR CONTROL DEVICE SETTINGS.
 - XXXX = 0403 FOR UNIT-1 & 0405 FOR UNIT-2.
 - SUCTION PIPING FROM TANK TO SKID DESIGNED ACCORDING TO BEST PRACTICES TO REDUCE TURBULENCE AND AIR ENTRAPMENT
- FLOODED SUCTION REQUIRED. 2 PSI MIN REQUIRED AT FLANGE FOR SKID LOSSES.

IMPORTANTE
ESTE PLANO FUE ELABORADO EN AUTOCAD VIZOR
CONSERVARE MODIFICADO Y/ANEXO BY DWMT
RESPONSABLE
FUELO MODIFICADO A LA UNIDAD
AUTORIZACION DE ESTA UNIDAD.
ALL DIMENSIONS IN BRACKETE! | ARE
MILLIMETER EXPRESSED DIMENSIONS
ARE INCHES



REF.	FABRICANTE	FABRICANTE	Q/C
REF.	FABRICANTE	FABRICANTE	Q/C

AGM-02-0204-PLA-1-0046	DEVICE SUMMARY				
AGM-02-0204-PLA-G-0080	FLOW & PROCESS SPECIFICATIONS				
AGM-02-0204-PLA-M-0038	DEMIN WATER FORWARDING SKID GENERAL ARRANGEMENT				
AGM-02-0204-PLA-F-0039	PROCESS FLOW DIAGRAM				
Nº DE DOCUMENTO	DESCRIPCION	REV.	FECHA		
DOCUMENTOS DE REFERENCIA					
DERWICK	ProEnergy	COMPELEC	SENECA		
PLANO Nº:	REV:	DEMIN WATER FORWARDING/INJECTION SYSTEM P&ID			
PROYECTO Nº:		DUAL FUEL MOD. UNITS 298034 & 298035			
PROYECTO:	ESCALA:	NONE	PLANO Nº:		
REVISADO: C. Brown	CALCULO:		AGM-02-0204-PLA-P-0047		
DIBUJO: S. Bourke	REVISADO: J. Castillo	FECHA: 14/09/11			
APPROBADO: T. Kozlitz	DIBUJO:	ESC./PROYECTO:			
ARCHIVO:	APPROBADO: M. Monticelli	ARCHIVO:			

F_AQ_11 = 1189x341mm

△						
△						
△	14/09/11	ISSUED FOR CONSTRUCTION		SAB	CB	TK
△	13/07/11	ISSUED FOR REVIEW		SAB	CB	TK
△	15/03/11	ISSUED FOR REVIEW		SAB	CB	TK
REV.	FECHA	REVISIONES O MODIFICACIONES		DIBUJO	REVISO	APPROBO
REF. FABRICANTE						
REF. FABRICANTE		FABRICANTE		O/C.		

[illegible]

- NOTES:
- SEE AGM-02-0204-PLA-I-0046 (DEVICE SUMMARY) MLI 0414 FOR CONTROL DEVICE SETTINGS.
 - QTY'S ARE PER UNIT.

IMPORTANT
ESTE PLANO FUE ELABORADO EN AUTOCAD VIZOR
CONSUENTE MODIFICADO Y VALIDADO BY DWG
RESPONSABLE
FUESE REVISADO CORRIERE ESTE PLANO SIN
AUTORIZACION DE ESTA UNIDAD.

ALL DIMENSIONS IN BRACKETE! I ARE
MILLIMETER EXPRESSED DIMENSIONS
ARE INCHES

PARTS LIST FOR WATER INJECTION SKID (SHEET-3)

ITEM	DEVICE	REFERENCE	QTY	DESCRIPTION	SUPPLIER PART No	MANUFACTURER
2001	PW1-1	PUMP/MOTOR ASSY	1	SUNDYNE/SUNFLO P-2000 w/BALDOR 60HP 3656 RPM 364TDZ MOTOR	P25-FCT	SUN-FLO
	23WN-1					
	88WN-1					
	96WN-1					
2001A	97WN-1	VFD	1	Variable Ferquancy Controller	FRN003G113-4UX	FUJI
2002	FM1-1	FLOW METER	1	TURBINE FLOWMETER	FT-24C3XWRLEGT026	FLOW TECHNOLOGY
	96WF-1					
	96WF-2					
	96WF-3					
2003	20WN-1	STOP VALVE		OUTLET STOP VALVE - PNEUMATIC ACTUATED - 2"x600#		CR-TEC
3001	WIGV-1	BALL VALVE	1	Inlet Ball Valve (3"-150lb RF)	53337	FLOWTECH
3002	WIGV-2	BALL VALVE	1	Outlet Ball Valve (3"-600lb RF)	53365	FLOWTECH
3003	WIGV-3	INSTRUMENT 3-WAY VALVE	1	Differential Pressure Guage Assembly 4004	SS-V3NBF8	SWAGELOCK
3004	WIGV-4A WIGV-4B WIGV-4C	NEEDLE VALVE	3	Filter Guage & Differential Pressure Guage Assembly Vent	SS-5PDF8	SWAGELOCK
3005	WIGV-5	NEEDLE VALVE	1	Installs on Guage Valve on Pressure Switch 6001 Assembly	SS-5PDM8	SWAGELOCK
3006	WIGV-6A WIGV-6B WIGV-6C WIGV-6D WIGV-6E WIGV-6F WIGV-6G WIGV-6H	GUAGE VALVE	6	Gauges and Instrumentation	SS-5PDGM8-F8	SWAGELOCK
3007	WIGV-7A WIGV-7B WIGV-7C WIGV-7D	BALL VALVE	4	Filter Housing Drain Valves	SS-45S12	SWAGELOCK
3008	WIGV-8A WIGV-8B	BALL VALVE	2	Filter Housing Vent Valves	SS-45S8	SWAGELOCK
3009	WIGV-9	BALL VALVE	1	Instrument Air Isolation to Stop Valve Assy	SS44S6	SWAGELOCK
3010	WIGV-10A WIGV-10B	PRESSURE RELIEF VALVE	2	Filter Housing PRV	SS-RL4S8	SWAGELOCK
4001	WIG-1A WIG-1B	PRESSURE GAUGE	2	Pressure Gauge 30" hg/0-100psig [460mm hg/0-689kpa]	9837760	WIKA
4002	WIG-2	TEMPERATURE GAUGE	1	Temperature Gauge 0-250°F [-20-120°C]	95240D006G4	WIKA
4003	WIG-3A WIG-3B WIG-3C WIG-3D	PRESSURE GAUGE	4	Pressure Gauge 0-1000psig [0-6895kpa]	938066	WIKA
4004	WIG-4	DIFFERENTIAL PRESSURE GUAGE	1	Pressure Gauge 0-25psig [0-172kpa]	120SC-12-00	MID-WEST
5001	FW1-2	Y-STRAINER	1	2"x150# w/80 MESH		MUELLER
5002	FW2-2	WI FILTER CARTRIDGE	2	Filter Cartridge	PH520-01-CG	HILLIARD
5003	FW1-1	WI FILTER w/ TRANSFER VALVE	1	3"x600#	52HMF-46900230	HILLIARD
5004	FW1-3	CONE STRAINER	1	Stariner	BS600CS	FABROTECH
6001	63WN-1	INLET PRESSURE	1	Pressure Switch 30"HG/0-100psig [460mm HG/0-689kpa]	56AG-AF216-M4-C1A	SOR
6002	63WN-3	WI FILTER DIFFERENTIAL PRESSURE	1	Pressure Switch	101AG-AF3-M4-C1A	SOR
6003	26JS-1	TEMPERATURE SWITCH	1	TEMP HL	201AG-AF125-U9-C7A	SOR
6004	26JS-2	TEMPERATURE SWITCH	1	TEMP HH	201AG-AF125-U9-C7A	SOR
7001	96WP-1	PRESSURE TRANSMITTER	1	WI SKID DISCHARGE PRESSURE	3051CG5A22A1AB4Q4	ROSEMOUNT
9003	88JS-1	COOLING FAN RECEPTICAL	1			
9014	AL-58	LIGHT FIXTURE	3		NFL4232/UNV	
	AS-28	AC SWITCH	1			
	AR-41	GFCI SOCKET OUTLET	1			
	CB2	A/C RECEPTICAL	1			

△					
△					
△	14/09/11	ISSUED FOR CONSTRUCTION	SAB	CB	TK
△	13/07/11	ISSUED FOR FABRICATION	SAB	CB	TK
REV.	FECHA	REVISIONES O MODIFICACIONES	DIBUJO	REVISO	APROBO

REF. FABRICANTE			
REF. FABRICANTE	FABRICANTE		Q/C

AGM-02-0204-PLA-I-0046 DEVICE SUMMARY			
AGM-02-0204-PLA-G-000 FLOW & PROCESS SPECIFICATIONS			
AGM-02-0204-PLA-M-004 WATER INJECTION SKID → GENERAL ARRANGEMENT			
AGM-02-0204-PLA-F-000 PROCESS FLOW DIAGRAM			
N° DE DOCUMENTO	DESCRIPCION	REV.	FECHA
DOCUMENTOS DE REFERENCIA			
<div><div>DERWICK</div><div>ProEnergy</div><div>COMPLEC</div><div>SENECA</div></div>			
CAPACITY EXPANSION OF ELECTRICITY GENERATION AND TRANSPORT IN THE ISLAND OF MARGARITA			
DEMIN WATER FORWARDING/INJECTION SYSTEM P&ID			
DUAL FUEL MOD. UNITS 298034 & 298035			
(WATER INJECTION SKID X405A & X405B)			
PLANO N°	REV.	ESCALA	PLANO No.
PROYECTO N°			
400-2980-1			
REVISADO: C. Brown	CALCULO:	FECHA: 14/09/11	
DIBUJO: S. Bourckel	REVISADO: J. Castillo		
APPROBADO T. Koontz	DIBUJO: EDC/PL020		
APPROBADO: M. Monticelli	ARCHIVO:		
		FIGURA: 4	DE: 4
		REV: 1	